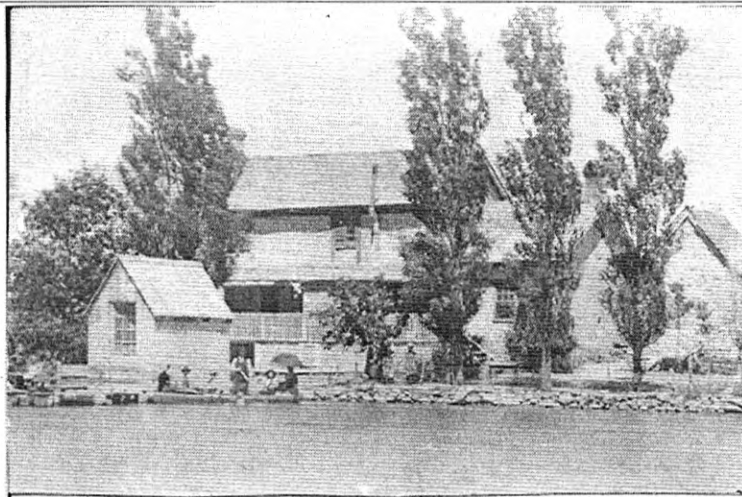


William Bell Clark and Frances Davies Clark

unknown, Milton, Tooele, Utah



Gordon Larson added this on 25 Jan 2010

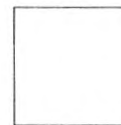
Category Type: Portrait / Family Photo

cedeniathomas originally submitted this to [CaDenia Tovson Thomas](#) on 23 Mar 2009

Home by mill pond. Family lore is this double house was built by Brigham Young for his two wives, so they could each have a section, or it was built by Brigham Young for his brother and his brother's two wives. William Bell Clark lived in it after them. This is a view of the back of the house and family enjoying the Mill Pond. The lady holding the umbrella is Erma Faye Clark, the lady left of her is her sister LaVon. Both ladies are daughters of William George Clark, a son of William Bell Clark and lived down the road about a half mile. All the other people are Clarks just don't know which ones!

Media Objects for William Bell Clark

You are at
the first
media object



William Bell Clark

Attached to in this tree



William Bell Clark
1834 - 1921

Other trees this object is saved to

scottsmith

by Pauline and Mark Smith on 26 Nov 2012

Crawford/Ford Extended Family Tree

by djcrow on 29 Jun 2012

Wallis Tree 10th April 2009

by patriciaobrien101 on 9 Jun 2012

SMITH Family Tree

by blueknight55ar on 18 Nov 2010

Howard Family Tree

by Michaelhoward901 on 4 Nov 2010

Lindley Family Tree

by lawton5942 on 4 Nov 2010

Duckett-Hundley Tree

by Annie D Hundley on 23 Sep 2010

Sandy's Family

by pegasus6794 on 3 Aug 2010

Esto Perpetua

by melabonico on 18 Jan 2010

Bell Family

by Philip_Prior on 15 Oct 2009

Behl Family Tree

by dfariscole on 4 Oct 2009

The Roseville Chronicles

by Legacies4ever on 1 Oct 2009

Sevey Family Tree

by asevey on 1 Aug 2009

Pearson Family Tree

by lpearson1 on 24 May 2009

Clark-Driggs Family Tree

by jwclark44 on 16 Jul 2012

Parsons Family Tree

by Jack Parsons on 14 Jun 2012