

Thurlow Beebe

Birth: Jul. 21, 1848
New York, USA
Death: Mar. 18, 1915

Ancestors of Thurlow Beebe

Generation 1

Thurlow Beebe, son of Daniel Beebe and Mary M. Luck, was born on July 21, 1848 in New York.

He died on March 18, 1915 in Richfield, Genesee, Michigan (Age: 67). He married Hellen Delphine Woodworth on November 10, 1869. She was born on June 29, 1847 in New York. She died on

April 16, 1913 in Richfield, Genesee, Michigan, USA (Age: 63).

Find A Grave Memorial#: (120326604)

He was buried in Oak Grove Cemetery Hillsdale.

Find A Grave Memorial#: (120326477)

She was buried in Oak Grove Cemetery.

Generation 2

Daniel Beebe, son of William Beebe and Katherine Wiltse, was born on October 09, 1809 in Madison Co., New York. He died on January 22, 1892 in Hillsdale, Hillsdale Co., Michigan, USA.

He married Mary M. Luck.

2.

Mary M. Luck was born in 1824 in New York. She died on April 30, 1899.

Find A Grave Memorial#: (120642029) He was buried in Oak Grove Cemetery.

Find A Grave Memorial#: (120641937) She was buried in Oak Grove Cemetery.

3.

Mary M. Luck and Daniel Beebe had the following children:

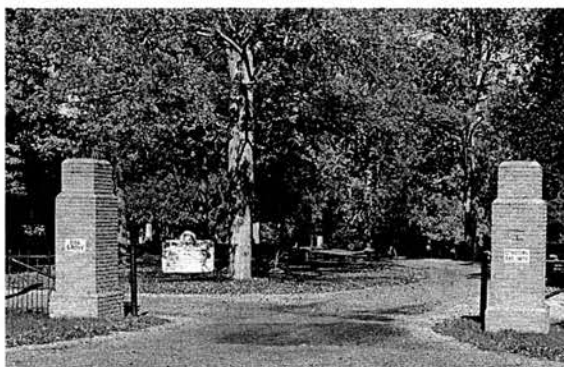
i. William Beebe was born in 1847 in New York. He died on February 06, 1913 in Lansing, Ingham, Michigan (Age: 66). He married Dorra Beebe. She was born on October 17, 1855. She died on August 01, 1883 in Hillsdale Country, Michigan, USA.

Find A Grave Memorial#: (120325602)

1. ii. Thurlow Beebe was born on July 21, 1848 in New York. He died on March 18, 1915 in Richfield, Genesee, Michigan (Age: 67). He married Hellen Delphine Woodworth on November 10, 1869. She was born on June 29, 1847 in New York. She died on



Added by: JOT



Cemetery Photo

Added by: Dennis Peterson

April 16, 1913 in Richfield, Genesee, Michigan, USA (Age: 63).

iii. Henry Beebe was born on August 03, 1860 in O. He died on October 03, 1865 in Hillsdale County, Michigan.

Find A Grave Memorial#: (120642253)

Generation 3

William Beebe was born about Abt. 1776 in Salisbury, Litchfield Co., Connecticut. He died between 1826-1868 in New York. He married Katherine Wiltse between 1796-1819.

4.

Katherine Wiltse was born on February 21, 1783 in Brookfield, Madison Co., New York.

She died

on April 12, 1828.

5.

Katherine Wiltse and William Beebe had the following children:

i. Thomas Wiltse Beebe was born on November 19, 1803 in Madison Co., New York.

He died on November 30, 1891 in Newark, New Jersey.

ii. Rachel Wiltse Beebe was born on January 30, 1805 in Madison Co., New York.

She died between 1819-1899.

iii. Mary Beebe was born on August 20, 1806 in Madison Co., New York. She died between 1820-1900.

iv. David Beebe was born on February 19, 1808 in Madison Co., New York. He died between 1809-1898.

2. v. Daniel Beebe was born on October 09, 1809 in Madison Co., New York. He died on January 22, 1892 in Hillsdale, Hillsdale Co., Michigan, USA. He married Mary M. Luck. She was born in 1824 in New York. She died on April 30, 1899.

vi. Emmaline Beebe was born on July 07, 1811 in Madison Co., New York. She died

vi. Emmaline Beebe was born on July 07, 1811 in Madison Co., New York. She died between 1825-1905.

vii. Briannia Beebe was born on September 07, 1813 in Madison Co., New York. She died between 1814-1907.

viii. Katherine Beebe was born on December 18, 1825 in Madison Co., New York. She died between 1826-1919.

Family links:

Parents:

Daniel Beebe (1809 - 1892)

Mary M. *Luck* Beebe (1824 - 1899)

Spouse:

Hellen Delphine *Woodworth* Beebe (1847 - 1913)*

Siblings:

Henry Beebe (____ - 1865)*

William Beebe (1846 - 1913)*

Thurlow Beebe (1848 - 1915)

Emma Beebe (1857 - 1880)*

*Calculated relationship

Burial:

Oak Grove Cemetery

Hillsdale

Hillsdale County

Michigan, USA

Plot: Section 1 Row 2

Created by: JOT

Record added: Nov 14, 2013

Find A Grave Memorial# 120326604