

X

Eli Mc Celdon or Mc Clelland Sage

KK15-XW4

BIRTH

14 Jul 1835 , Sevier, Tennessee

DEATH

08 Nov 1895

PARENTS

John D Sage
Sarah Thrash

SPOUSE

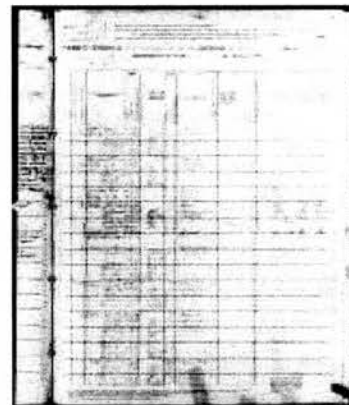
Mary Elizabeth
Icanberry
1842 - 1936 • KVJK-
D54

- [View in Family Tree](#)
- [Review Attachments](#)

Eli M C Sage

United States Census, 1880

Name	Eli M C Sage
Event Type	Census
Event Year	1880
Event Place	Pipe Stone Creek And Fish Creek, Jefferson, Montana, United States
Gender	Male
Age	46
Marital Status	Married
Race	White
Race (Original)	W
Occupation	Engineer
Relationship to Head of Household	Self
Relationship to Head of Household (Original)	Self
Birth Year (Estimated)	1834
Birthplace	Tennessee, United States
Father's Birthplace	Virginia, United States
Mother's Birthplace	Tennessee, United States
Affiliate Name	The U.S. National Archives and Records Administration (NARA)
Affiliate Publication Number	T9
Affiliate Film Number	0742



View the original document. The original may contain more information than was indexed.

UNITED STATES CENSUS, 1880

District	17
Sheet Number and Letter	251C
GS Film Number	1254742
Digital Folder Number	004242183
Image Number	00513

HOUSEHOLD ROLE GENDER AGE BIRTHPLACE

Eli M C Sage	Self	M	46	Tennessee, United States
Delila E Sage	Daughter	F	18	California, United States
Gorden W Sage	Son	M	15	Oregon, United States
Archie A Sage	Son	M	13	California, United States
Eli E Sage	Son	M	9	California, United States
Birdy M Sage	Daughter	F	2	Missouri, United States
Mary E Sage	Wife	F	38	Missouri, United States
Rhoda A Sage	Daughter	F	7	Missouri, United States
Wm R Sage	Son	M	20	Missouri, United States

CITING THIS RECORD

"United States Census, 1880," database with images, *FamilySearch* (<https://familysearch.org/ark:/61903/1:1:MH84-KWY> : accessed 30 October 2015), Eli M C Sage, Pipe Stone Creek And Fish Creek, Jefferson, Montana, United States; citing enumeration district 17, sheet 251C, NARA microfilm publication T9 (Washington D.C.: National Archives and Records Administration, n.d.), roll 0742; FHL microfilm 1,254,742.

CITING THIS RECORD

"United States Census, 1880," database with images, *FamilySearch* (<https://familysearch.org/ark:/61903/1:1:MH84-KWY> : accessed 30 October 2015), Eli M C Sage, Pipe Stone Creek And Fish Creek, Jefferson, Montana, United States; citing enumeration district 17, sheet 251C, NARA microfilm publication T9 (Washington D.C.: National Archives and Records Administration, n.d.), roll 0742; FHL microfilm 1,254,742.

