

Thomas Jefferson Butterfield

Birth: Jun. 17, 1811
Farmington
Franklin County
Maine, USA

Death: Apr. 2, 1890
Herriman
Salt Lake County
Utah, USA

Additional GPS Coordinates:

Obelisk Marker: 40.525067, -112.034083
Fort Herriman DPU Marker: 40.520767,
-112.032817
Fort Herriman Cabins: 40.520417,
-112.031717

Family links:

Parents:

Zachariah Butterfield (1782 - 1866)
Martha *Hiscock* Butterfield (1788 - 1843)

Spouses:

Mary Jane *Parker* Butterfield (1817 - 1901)
Mary Jane *Farmer* Butterfield (1829 - 1890)

Children:

Mary Jane *Butterfield* Doty (1836 - 1915)*
Eliza Ann Butterfield (1839 - 1841)*
Almon Butterfield (1844 - 1926)*
George Butterfield (1847 - 1971)*
Sarah *Butterfield* Freeman (1849 - 1915)*
Olive Butterfield Miller (1851 - 1936)*
Thomas Butterfield (1853 - 1926)*
Samuel Butterfield (1855 - 1930)*
Hannah *Butterfield* Carter (1858 - 1945)*
John Morris Butterfield (1859 - 1861)*
Elizabeth Morris *Butterfield* Densley (1861 -
1931)*
Zachariah Butterfield (1864 - 1963)*
Edwin James Butterfield (1868 - 1921)*

*Calculated relationship

Note: Wives: Mary Jane Parker, Mary Farmer,
Mary Densley, & Lucinda Wood.

Burial:

Herriman Cemetery

Herriman

Salt Lake County

Utah, USA

GPS (lat/lon): 40.52532, -112.0347



Added by: Jeran Farley



Added by: Jeran Farley



Added by: John Warnke

There are 3 more photos not showing...

Mary Jane Parker Butterfield

Birth: Jan. 21, 1817
Parsonsfield
York County
Maine, USA

Death: Jul. 21, 1901
Herriman
Salt Lake County
Utah, USA

Father: Samuel Parker of Berwich, York,
Maine, United States

Mother: Hannah Edgecomb of Parsonfield,
York, Maine, United States

Family links:

Spouse:

Thomas Jefferson Butterfield (1811 - 1890)*

Children:

Mary Jane *Butterfield* Doty (1836 - 1915)*

Eliza Ann Butterfield (1839 - 1841)*

Almon Butterfield (1844 - 1926)*

George Butterfield (1847 - 1971)*

Sarah *Butterfield* Freeman (1849 - 1915)*

Olive Butterfield Miller (1851 - 1936)*

Thomas Butterfield (1853 - 1926)*

Samuel Butterfield (1855 - 1930)*

Hannah *Butterfield* Carter (1858 - 1945)*

*Calculated relationship

Note: Wife of Thomas Jefferson Butterfield,
Founder of Herriman.

Burial:

Herriman Cemetery

Herriman

Salt Lake County

Utah, USA

GPS (lat/lon): 40.52535, -112.0347

Maintained by: Jeran Farley

Originally Created by: John Warnke

Record added: Feb 18, 2007

Find A Grave Memorial# 17972687



Added by: Jeran Farley



Added by: Jeran Farley

Mary Jane Butterfield Doty

Birth: Jan. 18, 1836
 Death: Feb. 18, 1915

Family links:

Parents:

Thomas Jefferson Butterfield (1811 - 1890)
 Mary Jane *Parker* Butterfield (1817 - 1901)

Spouses:

Thomas Levi Whittle (1812 - 1868)
 Benjamin Landon Doty (1835 - 1896)*

Children:

Minerva *Whittle* Allen (1854 - 1929)*
 Edwin Butterfield Whittle (1858 - 1931)*
 Mary Jane *Whittle* Jensen (1863 - 1940)*
 Thomas Almon Whittle (1865 - 1926)*
 George Ellis Doty (1875 - 1945)*
 Alfaretta Doty (1877 - 1923)*

Siblings:

Mary Jane *Butterfield* Doty (1836 - 1915)
 Eliza Ann Butterfield (1839 - 1841)*
 Almon Butterfield (1844 - 1926)*
 George Butterfield (1847 - 1971)*
 Sarah *Butterfield* Freeman (1849 - 1915)*
 Olive Butterfield Miller (1851 - 1936)*
 Thomas Butterfield (1853 - 1926)*
 Samuel Butterfield (1855 - 1930)*
 Hannah *Butterfield* Carter (1858 - 1945)*
 John Morris Butterfield (1859 - 1861)**
 Elizabeth Morris *Butterfield* Densley (1861 - 1931)**
 Zachariah Butterfield (1864 - 1963)**
 Edwin James Butterfield (1868 - 1921)**

*Calculated relationship

**Half-sibling

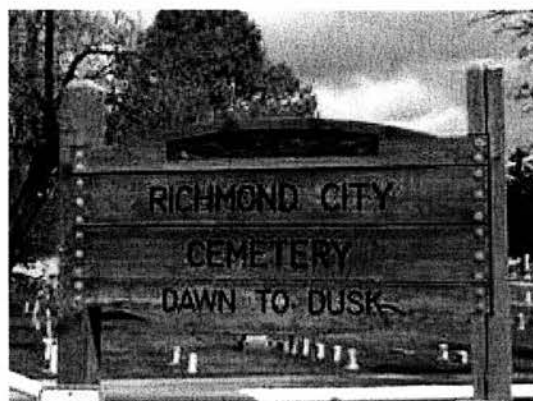
Burial:

Richmond City Cemetery
 Richmond
 Cache County
 Utah, USA

Created by: Wes & Debi Grossnickle
 Record added: Oct 01, 2010
 Find A Grave Memorial# 59496437



Added by: Wes & Debi Grossnickle



Cemetery Photo

Added by: Constance Green

- JARROTT P. COX

Added: Nov. 27, 2014



- Blaine & Elaine Berger

Added: Oct. 18, 2011



Mormon Pioneer - Allen Taylor
 Company 1849 - an example of
 great faith.

- Bryan Hatch

Added: Sep. 29, 2011



Eliza Ann Butterfield

Birth: Aug. 4, 1839
Hancock County
Illinois, USA
Death: Jul. 27, 1841

Family links:

Parents:

Thomas Jefferson Butterfield (1811 - 1890)
Mary Jane *Parker* Butterfield (1817 - 1901)

Siblings:

Mary Jane *Butterfield* Doty (1836 - 1915)*
Eliza Ann Butterfield (1839 - 1841)
Almon Butterfield (1844 - 1926)*
George Butterfield (1847 - 1971)*
Sarah *Butterfield* Freeman (1849 - 1915)*
Olive Butterfield Miller (1851 - 1936)*
Thomas Butterfield (1853 - 1926)*
Samuel Butterfield (1855 - 1930)*
Hannah *Butterfield* Carter (1858 - 1945)*
John Morris Butterfield (1859 - 1861)**
Elizabeth Morris *Butterfield* Densley (1861 - 1931)**
Zachariah Butterfield (1864 - 1963)**
Edwin James Butterfield (1868 - 1921)**

*Calculated relationship

**Half-sibling

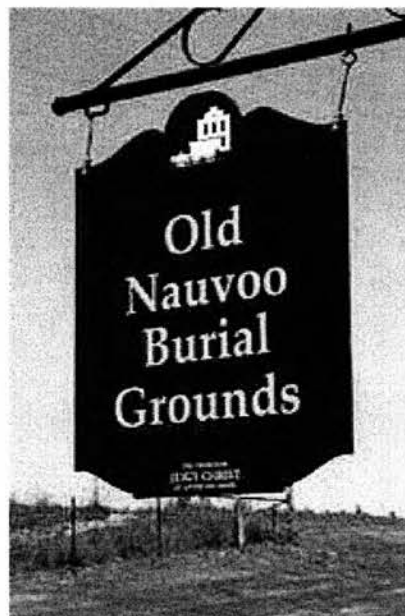
Burial:

Old Nauvoo Burial Grounds
Nauvoo
Hancock County
Illinois, USA

Created by: Bryan Hatch

Record added: Jun 19, 2013

Find A Grave Memorial# 112558664



Cemetery Photo

Added by: Carl W. McBrayer



- JARROTT P. COX

Added: Nov. 27, 2014

Almon Butterfield

Birth: Jul. 14, 1844
 Nauvoo
 Hancock County
 Illinois, USA

Death: Feb. 5, 1926
 Herriman
 Salt Lake County
 Utah, USA



Added by: [SMSmith](#)

Family links:

Parents:

Thomas Jefferson Butterfield (1811 - 1890)
 Mary Jane *Parker* Butterfield (1817 - 1901)

Spouses:

Elizabeth Ann *Farmer* Butterfield (1848 - 1931)
 Sarah *Mitchell* Butterfield (1863 - 1929)*

Children:

Agnes Ann Butterfield (1867 - 1867)*
 Almon Thomas Butterfield (1868 - 1940)*
 Sarah Jane *Butterfield* Crane (1872 - 1958)*
 Sarah Jane *Butterfield* Crane (1872 - 1958)*
 Alice Elizabeth *Butterfield* Bowen (1891 - 1984)*
 Lyman Butterfield (1893 - 1893)*

Siblings:

Mary Jane *Butterfield* Doty (1836 - 1915)*
 Eliza Ann Butterfield (1839 - 1841)*
 Almon Butterfield (1844 - 1926)
 George Butterfield (1847 - 1971)*
 Sarah *Butterfield* Freeman (1849 - 1915)*
 Olive Butterfield Miller (1851 - 1936)*
 Thomas Butterfield (1853 - 1926)*
 Samuel Butterfield (1855 - 1930)*
 Hannah *Butterfield* Carter (1858 - 1945)*
 John Morris Butterfield (1859 - 1861)**
 Elizabeth Morris *Butterfield* Densley (1861 - 1931)**
 Zachariah Butterfield (1864 - 1963)**
 Edwin James Butterfield (1868 - 1921)**

*[Calculated relationship](#)

**[Half-sibling](#)

Burial:

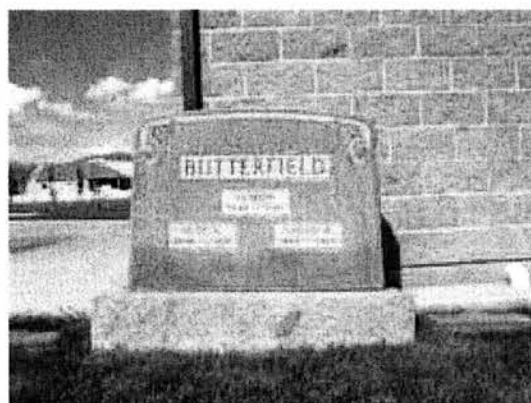
[Herriman Cemetery](#)
 Herriman
 Salt Lake County
 Utah, USA

Maintained by: [Skettieman](#)

Originally Created by: [John Warnke](#)



Added by: [John Warnke](#)



Added by: [John Warnke](#)

There are 2 more photos not showing...
[Click here to view all images...](#)

- [JARROTT P. COX](#)

Added: Nov. 27, 2014

George Butterfield

Birth: Mar. 23, 1847
 Nauvoo
 Hancock County
 Illinois, USA

Death: Apr. 1, 1971
 Riverton
 Salt Lake County
 Utah, USA



Added by: [John Warnke](#)

Family links:

Parents:

Thomas Jefferson Butterfield (1811 - 1890)
 Mary Jane *Parker* Butterfield (1817 - 1901)

Spouse:

Emma *Cook Stocking* Butterfield (1850 - 1937)

Children:

George William Butterfield (1870 - 1919)*

Siblings:

Mary Jane *Butterfield* Doty (1836 - 1915)*
 Eliza Ann Butterfield (1839 - 1841)*
 Almon Butterfield (1844 - 1926)*
 George Butterfield (1847 - 1971)
 Sarah *Butterfield* Freeman (1849 - 1915)*
 Olive Butterfield Miller (1851 - 1936)*
 Thomas Butterfield (1853 - 1926)*
 Samuel Butterfield (1855 - 1930)*
 Hannah *Butterfield* Carter (1858 - 1945)*
 John Morris Butterfield (1859 - 1861)**
 Elizabeth Morris *Butterfield* Densley (1861 - 1931)**
 Zachariah Butterfield (1864 - 1963)**
 Edwin James Butterfield (1868 - 1921)**

*Calculated relationship

**Half-sibling

Burial:

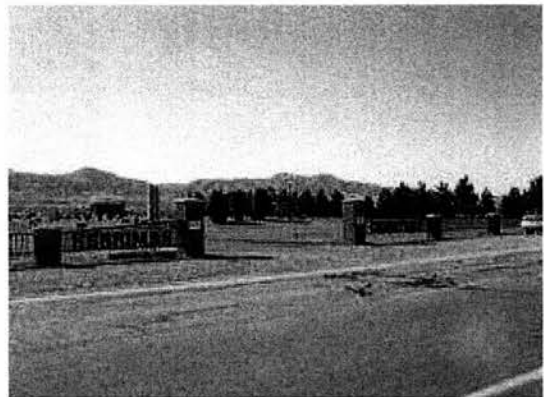
Herriman Cemetery
 Herriman
 Salt Lake County
 Utah, USA

Maintained by: [Skettieman](#)

Originally Created by: [John Warnke](#)

Record added: Feb 17, 2007

Find A Grave Memorial# 17961552



Cemetery Photo

Added by: [John Warnke](#)



- [JARROTT P. COX](#)

Added: Nov. 27, 2014



- [Skettieman](#)

Added: Oct. 1, 2011



Mormon Pioneer - Allen Taylor
 Company 1849 - an example of
 great faith.

- [Bryan Hatch](#)

Added: Sep. 29, 2011

There is 1 more note not showing...

[Click here to view all notes...](#)

Olive Butterfield Miller

Birth: Feb. 5, 1851
West Jordan
Salt Lake County
Utah, USA

Death: Mar. 10, 1936
Herriman
Salt Lake County
Utah, USA

Deseret News: 11 March 1936



Added by: [Bryan Hatch](#)

Local and State Obituaries

OLIVE MILLER

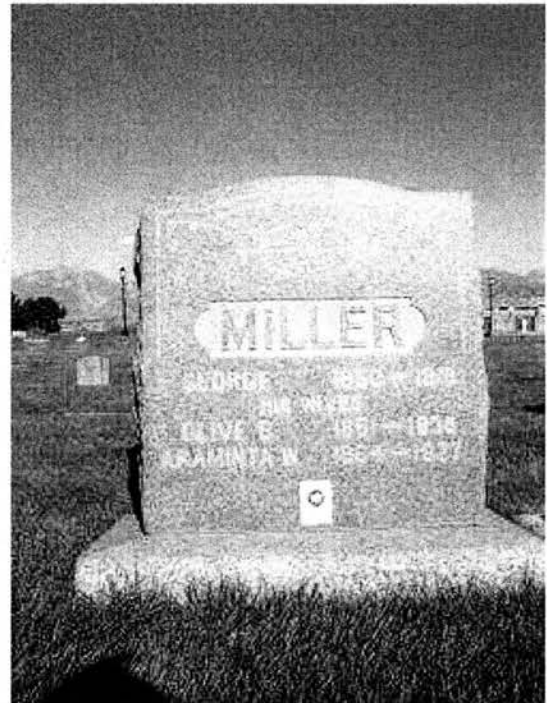
HERRIMAN - Olive Miller, 85, oldest resident of Herriman, dies at her home here at 4:45 a.m., Tuesday, after a week's illness. She was born Feb. 5, 1851, at West Jordan, Utah, daughter of Thomas Butterfield and Mary Jane Parker Butterfield.

She moved to Herriman at the age of [illegible - possibly 40?] years, where her parents helped to build and lived in the Old Fort which stood just north of the present townsite.

She was married to George Miller, Jan. 24, 1869, in the Endowment House. She was the mother of 13 children, of which 10 survive, namely George J Miller, T. H. [Thomas Henry] Miller, and Spencer Miller, Herriman; Mrs. Mary Jane [Miller] Crane, Riverton; Mrs. Olive [Matilda Miller] Day and Orson Miller, Salt Lake; Mrs. Elizabeth L. [Miller] Leak, Centerville; Mrs. [Sarah Surinda Miller Nell] R. P. [Reuben Philip] Nell, and Mrs. [Euettia Edith Miller] Daniel [Alexander] Peterson, Lark; William L. Miller, Provo; also two brothers, Zach Butterfield and Lyman Butterfield, both of Riverton; one sister, Mrs. Hannah Carter of Herriman, 58 grandchildren and 65 great grandchildren.

Funeral services will be held Friday at 1 p.m. in the Herriman ward chapel. Friends may call at the C.J. Goff mortuary in Midvale until 6 p.m. Thursday and at the family residence Friday [about] the time of the services.

Includes: Picture - Mrs. Miller



Added by: [John Warnke](#)



Added by: [John Warnke](#)

There are 2 more photos not showing...
[Click here to view all images...](#)

Family links:

Parents:

Thomas Jefferson Butterfield (1811 - 1890)
 Mary Jane *Parker* Butterfield (1817 - 1901)

Spouse:

George Miller (1850 - 1918)

Children:

Mary Jane *Miller* Crane (1872 - 1958)*
 Elizabeth Louisine *Miller* Leak (1879 - 1954)*
 Almon Joseph Miller (1885 - 1917)*
 Euettia Edith *Miller* Peterson (1886 - 1965)*

Siblings:

Mary Jane *Butterfield* Doty (1836 - 1915)*
 Eliza Ann Butterfield (1839 - 1841)*
 Almon Butterfield (1844 - 1926)*
 George Butterfield (1847 - 1971)*
 Sarah *Butterfield* Freeman (1849 - 1915)*
 Olive Butterfield Miller (1851 - 1936)
 Thomas Butterfield (1853 - 1926)*
 Samuel Butterfield (1855 - 1930)*
 Hannah *Butterfield* Carter (1858 - 1945)*
 John Morris Butterfield (1859 - 1861)**
 Elizabeth Morris *Butterfield* Densley (1861 - 1931)**
 Zachariah Butterfield (1864 - 1963)**
 Edwin James Butterfield (1868 - 1921)**

*Calculated relationship

**Half-sibling

Inscription:

s/w George Miller & Araminta W. Miller

Burial:

Herriman Cemetery

Herriman

Salt Lake County

Utah, USA

GPS (lat/lon): 40.52523, -112.03463

Maintained by: Bryan Hatch

Originally Created by: John Warnke

Record added: Sep 08, 2005

Find A Grave Memorial# 11705696



- JARROTT P. COX

Added: Nov. 27, 2014



- White Crane Villa Family

Added: Jan. 22, 2014



You are not forgotten.

- Bryan Hatch

Added: Jul. 19, 2010

There is 1 more note not showing...
[Click here to view all notes...](#)

Thomas Butterfield, Jr

Birth: Apr. 23, 1853
Herriman
Salt Lake County
Utah, USA

Death: Mar. 20, 1926
Herriman
Salt Lake County
Utah, USA

Family links:

Parents:

Thomas Jefferson Butterfield (1811 - 1890)
Mary Jane Parker Butterfield (1817 - 1901)

Spouses:

Lucy Wheadon Butterfield (1857 - 1953)
Catherine Emeline Butterfield (1855 - 1915)*

Children:

Martha Jane Butterfield Stocking (1880 - 1962)*
Hannah Roseanna Butterfield Crane (1880 - 1911)*
Thomas Solomon Butterfield (1882 - 1964)*
Sarah Rebecca Butterfield Hill (1882 - 1972)*
John Almond Butterfield (1884 - 1965)*
Harriett Serinda Butterfield Jensen (1884 - 1956)*
George Jefferson Butterfield (1888 - 1965)*
Emiline Persilda Butterfield Eastman (1891 - 1988)*
Edwin Parker Butterfield (1894 - 1985)*
Lucy Marinda Butterfield Selin (1896 - 1981)*

Siblings:

Mary Jane Butterfield Doty (1836 - 1915)*
Eliza Ann Butterfield (1839 - 1841)*
Almon Butterfield (1844 - 1926)*
George Butterfield (1847 - 1971)*
Sarah Butterfield Freeman (1849 - 1915)*
Olive Butterfield Miller (1851 - 1936)*
Thomas Butterfield (1853 - 1926)
Samuel Butterfield (1855 - 1930)*
Hannah Butterfield Carter (1858 - 1945)*
John Morris Butterfield (1859 - 1861)**
Elizabeth Morris Butterfield Densley (1861 - 1931)**
Zachariah Butterfield (1864 - 1963)**
Edwin James Butterfield (1868 - 1921)**

*Calculated relationship

**Half-sibling

Burial:

2259479_0001481

1473

PLACE IN FRONT OF GRAVE

STATE OF UTAH - DEATH CERTIFICATE

PLACES OF BIRTH: 1853

PLACE OF DEATH: 1926

NAME: Thomas Butterfield

DATE OF BIRTH: Apr 23 1853

DATE OF DEATH: Mar 20 1926

PLACE OF DEATH: Herriman Utah

SEX: Male

HEIGHT: 5 10

WEIGHT: 140

HAIR: Gray

EYES: Blue

BLOOD: O

RELIGION: Methodist

EDUCATION: High School

OCCUPATION: Farmer

CAUSE OF DEATH: Heart Failure

DIAGNOSIS: Myocardial Infarction

PHYSICIAN: Dr. J. W. Smith

REPORTING PHYSICIAN: Dr. J. W. Smith

DEATH CERTIFICATE NO. 1473

WED CAREFULLY INSPECTORS OF BIRTH OF GRAVE

Added by: White Crane Villa Family



Added by: Jeran Farley

Herriman Cemetery

Herriman
Salt Lake County
Utah, USA

Maintained by: Jeran Farley
Originally Created by: John Warnke
Record added: Feb 18, 2007
Find A Grave Memorial# 17972557



Added by: Jeran Farley

There are 2 more photos not showing...
[Click here to view all images...](#)



- JARROTT P. COX
Added: Nov. 27, 2014



- gaby hayes
Added: Feb. 25, 2007

Samuel Butterfield

Birth: Feb. 27, 1855
Herriman
Salt Lake County
Utah, USA

Death: Oct. 19, 1930
Herriman
Salt Lake County
Utah, USA

Children: Joseph W., Sarah Ann, O. Percinda,
H. Pearl, G. Nephi, E. Morrow, Gloria B.,
Marvin D., Glayds E., Ruth, W. Parker

Family links:

Parents:

Thomas Jefferson Butterfield (1811 - 1890)
Mary Jane *Parker* Butterfield (1817 - 1901)

Spouses:

Sarah Jane *Farmer* Butterfield (1858 - 1934)
Sarah Ann *Newman* Butterfield (1869 - 1887)

Children:

Samuel James Butterfield (1876 - 1910)*
Mary Jane Delila *Butterfield* Freeman (1878 -
1936)*

Lily May Butterfield (1882 - 1882)*
Clara Elizabeth Butterfield (1883 - 1884)*
Thomas Almon Butterfield (1885 - 1942)*
Joseph Willard Butterfield (1886 - 1887)*
Sarah Ann Eliza Butterfield (1888 - 1888)*
Emma Lenora *Butterfield* Crane (1889 - 1972)*
Olive Percinda *Butterfield* Fraser (1890 - 1978)*
Hannah Pearl *Butterfield* Bigler (1892 - 1978)*
Agnes Ann Butterfield (1894 - 1894)*
George Nephi Butterfield (1895 - 1972)*
Edward Moroni Butterfield (1897 - 1897)*
Gloria Beatrice Butterfield (1897 - 1904)*
Marvin Deverl Butterfield (1904 - 1965)*
Gladys Eurilda Butterfield (1907 - 1907)*
Ruth *Butterfield* Jeffrey (1908 - 1979)*

Siblings:

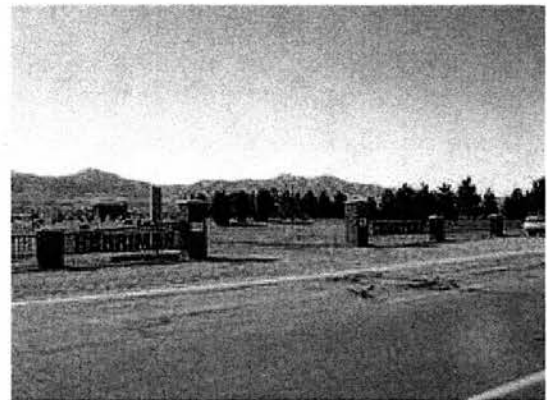
Mary Jane *Butterfield* Doty (1836 - 1915)*
Eliza Ann Butterfield (1839 - 1841)*
Almon Butterfield (1844 - 1926)*
George Butterfield (1847 - 1971)*
Sarah *Butterfield* Freeman (1849 - 1915)*
Olive Butterfield Miller (1851 - 1936)*
Thomas Butterfield (1853 - 1926)*
Samuel Butterfield (1855 - 1930)
Hannah *Butterfield* Carter (1858 - 1945)*
John Morris Butterfield (1859 - 1861)**
Elizabeth Morris *Butterfield* Densley (1861 -



Added by: [John Warnke](#)



Added by: [John Warnke](#)



Cemetery Photo

Added by: [John Warnke](#)

- [JARROTT P. COX](#)

Added: Nov. 27, 2014

1931)**

Zachariah Butterfield (1864 - 1963)**

Edwin James Butterfield (1868 - 1921)**

*Calculated relationship

**Half-sibling

Burial:

Herriman Cemetery

Herriman

Salt Lake County

Utah, USA

Plot: B-02-034-8

Maintained by: Skettieman

Originally Created by: John Warnke

Record added: Sep 06, 2005

Find A Grave Memorial# 11698933



- Skettieman

Added: Jan. 13, 2012



- gaby hayes

Added: Feb. 25, 2007

Hannah Butterfield Carter

Birth: Feb. 1, 1858
Herriman
Salt Lake County
Utah, USA

Death: Jul. 3, 1945
Herriman
Salt Lake County
Utah, USA



Added by: [John Warnke](#)

Family links:

Parents:

Thomas Jefferson Butterfield (1811 - 1890)
Mary Jane *Parker* Butterfield (1817 - 1901)

Spouse:

Franklin Fitzfield Carter (1848 - 1933)*

Children:

Almon Irista Carter (1879 - 1945)*

Siblings:

Mary Jane *Butterfield* Doty (1836 - 1915)*
Eliza Ann Butterfield (1839 - 1841)*
Almon Butterfield (1844 - 1926)*
George Butterfield (1847 - 1971)*
Sarah *Butterfield* Freeman (1849 - 1915)*
Olive Butterfield Miller (1851 - 1936)*
Thomas Butterfield (1853 - 1926)*
Samuel Butterfield (1855 - 1930)*
Hannah *Butterfield* Carter (1858 - 1945)
John Morris Butterfield (1859 - 1861)**
Elizabeth Morris *Butterfield* Densley (1861 - 1931)**
Zachariah Butterfield (1864 - 1963)**
Edwin James Butterfield (1868 - 1921)**

*Calculated relationship

**Half-sibling

Inscription:

"Mother"

Burial:

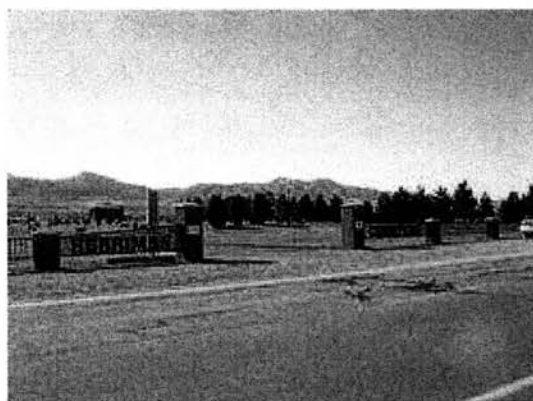
Herriman Cemetery
Herriman
Salt Lake County
Utah, USA
Plot: B-02-044-7

Maintained by: [Skettieman](#)

Originally Created by: [John Warnke](#)

Record added: Sep 08, 2005

Find A Grave Memorial# 11705603



Cemetery Photo

Added by: [John Warnke](#)



- [JARROTT P. COX](#)

Added: Nov. 27, 2014



- [Skettieman](#)

Added: Sep. 30, 2011



- [gaby hayes](#)

Added: Feb. 25, 2007

Elizabeth Morris *Butterfield* Densley

Birth: Jul. 20, 1861
Herriman
Salt Lake County
Utah, USA

Death: May 14, 1931
Riverton
Salt Lake County
Utah, USA



Added by: [Skettieman](#)

Family links:

Parents:

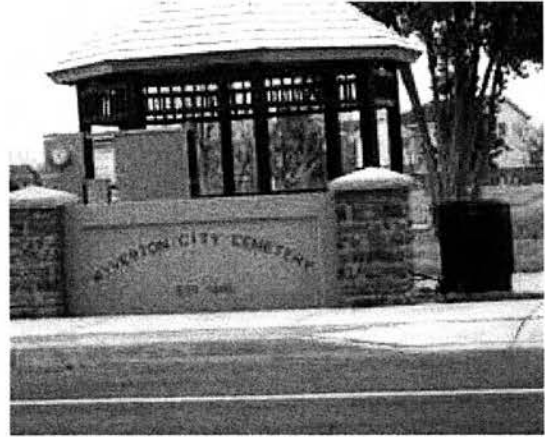
Thomas Jefferson Butterfield (1811 - 1890)
Mary Jane *Farmer* Butterfield (1829 - 1890)

Spouse:

Daniel Densley (1858 - 1930)

Children:

Elizabeth Emma Densley (1883 - 1891)*
Daniel Edwin Densley (1886 - 1950)*
Thomas Lyman Densley (1889 - 1955)*
Maryetta Densley (1891 - 1901)*
Elva Pearl *Densley* Harper (1892 - 1932)*
Leah Lenore *Densley* Lloyd (1895 - 1927)*
Marie Vernice *Densley* Bills (1900 - 1998)*
Gordon Zachariah Densley (1902 - 1977)*
Golden Earl Densley (1903 - 1982)*



Cemetery Photo

Added by: [Skettieman](#)

Siblings:

Mary Jane *Butterfield* Doty (1836 - 1915)**
Eliza Ann Butterfield (1839 - 1841)**
Almon Butterfield (1844 - 1926)**
George Butterfield (1847 - 1971)**
Sarah *Butterfield* Freeman (1849 - 1915)**
Olive Butterfield Miller (1851 - 1936)**
Thomas Butterfield (1853 - 1926)**
Samuel Butterfield (1855 - 1930)**
Hannah *Butterfield* Carter (1858 - 1945)**
John Morris Butterfield (1859 - 1861)*
Elizabeth Morris *Butterfield* Densley (1861 - 1931)
Zachariah Butterfield (1864 - 1963)*
Edwin James Butterfield (1868 - 1921)*

- [JARROTT P. COX](#)

Added: Nov. 27, 2014



- [Skettieman](#)

Added: Jul. 13, 2009



*Calculated relationship

**Half-sibling

Burial:

Riverton City Cemetery

Riverton
Salt Lake County
Utah, USA
Plot: 10-07-09

Zachariah Butterfield

Birth: Jan. 4, 1864
Herriman
Salt Lake County
Utah, USA

Death: Dec. 31, 1963
Riverton
Salt Lake County
Utah, USA



Added by: [Skettieman](#)

The 1870 US Census has Zachariah listed with Mary Parker Butterfield as his mother.

Family links:

Parents:

Thomas Jefferson Butterfield (1811 - 1890)
Mary Jane *Farmer* Butterfield (1829 - 1890)

Spouse:

Isabella Dansie Butterfield (1869 - 1937)

Children:

Zachariah Trussler Butterfield (1888 - 1952)*
Bernice Butterfield (1899 - 1900)*
Rheabel Butterfield Platt (1906 - 1980)*

Siblings:

Mary Jane *Butterfield* Doty (1836 - 1915)**
Eliza Ann Butterfield (1839 - 1841)**
Almon Butterfield (1844 - 1926)**
George Butterfield (1847 - 1971)**
Sarah *Butterfield* Freeman (1849 - 1915)**
Olive Butterfield Miller (1851 - 1936)**
Thomas Butterfield (1853 - 1926)**
Samuel Butterfield (1855 - 1930)**
Hannah *Butterfield* Carter (1858 - 1945)**
John Morris Butterfield (1859 - 1861)*
Elizabeth Morris *Butterfield* Densley (1861 - 1931)*
Zachariah Butterfield (1864 - 1963)
Edwin James Butterfield (1868 - 1921)*

*Calculated relationship

**Half-sibling

Burial:

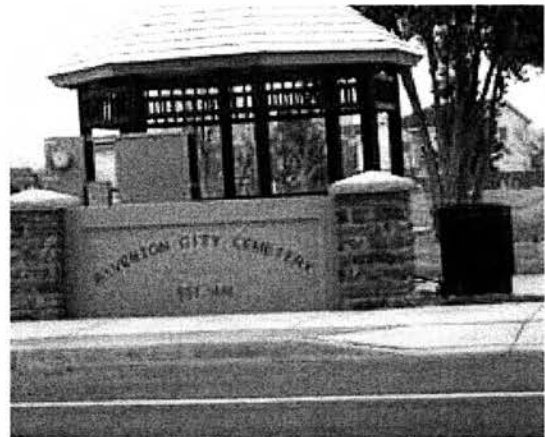
Riverton City Cemetery

Riverton
Salt Lake County
Utah, USA
Plot: 08-07-01

Created by: [Skettieman](#)

Record added: Oct 31, 2008

Find A Grave Memorial# 31041455



Cemetery Photo

Added by: [Skettieman](#)



- [JARROTT P. COX](#)

Added: Nov. 27, 2014



- [Skettieman](#)

Added: Jul. 13, 2009

Edwin James Butterfield

Birth: Mar. 4, 1868
Herriman
Salt Lake County
Utah, USA

Death: Nov. 19, 1921
Salt Lake City
Salt Lake County
Utah, USA



Added by: [Grave Chick](#)

The Utah DC states Mary Farmer as the mother of Edwin James Butterfield.

Family links:

Parents:

Thomas Jefferson Butterfield (1811 - 1890)
Mary Jane *Farmer* Butterfield (1829 - 1890)

Spouses:

Vilate Sophia *Newman* Butterfield (1871 - 1910)
Elizabeth Butterfield *Clark* Kimball (1867 - 1952)*

Children:

Mary Evangeline *Butterfield* Carter (1892 - 1913)*
Edwin Leslie Butterfield (1894 - 1963)*
Elias Lorenzo Butterfield (1896 - 1902)*
William Harold Butterfield (1899 - 1900)*
Joseph Alvin Butterfield (1902 - 1902)*
Max Samuel Butterfield (1910 - 1946)*



Cemetery Photo

Added by: [Jim Tipton](#)

Siblings:

Mary Jane *Butterfield* Doty (1836 - 1915)**
Eliza Ann Butterfield (1839 - 1841)**
Almon Butterfield (1844 - 1926)**
George Butterfield (1847 - 1971)**
Sarah *Butterfield* Freeman (1849 - 1915)**
Olive Butterfield Miller (1851 - 1936)**
Thomas Butterfield (1853 - 1926)**
Samuel Butterfield (1855 - 1930)**
Hannah *Butterfield* Carter (1858 - 1945)**
John Morris Butterfield (1859 - 1861)*
Elizabeth Morris *Butterfield* Densley (1861 - 1931)*
Zachariah Butterfield (1864 - 1963)*
Edwin James Butterfield (1868 - 1921)

*[Calculated relationship](#)

**Half-sibling

Burial:

[Salt Lake City Cemetery](#)
Salt Lake City
Salt Lake County
Utah, USA



- [JARROTT P. COX](#)

Added: Nov. 27, 2014



- [Skettieman](#)

Added: May. 14, 2011

Plot: R_5_12_3W

Created by: Skettieman

Record added: May 14, 2011

Find A Grave Memorial# 69799092