

## Ernest B. Harrison

Birth: Aug. 20, 1869

Death: Nov. 6, 1941

### Family links:

#### Parents:

Reuben H. Harrison (\_\_\_\_ - 1896)

Christiana *Gosnell* Harrison (\_\_\_\_ - 1914)

#### Spouse:

Blanche B. *Wolfe* Harrison (1875 - 1954)\*

#### Children:

Grover E. Harrison (1892 - 1965)\*

Algy May *Harrison* Farver (1895 - 1981)\*

Mildred M. *Harrison* Gosnell (1899 - 1986)\*

Charles E. Harrison (1900 - 1983)\*

\*Calculated relationship

#### Burial:

Morgan Chapel United Methodist Church

Cemetery

Woodbine

Carroll County

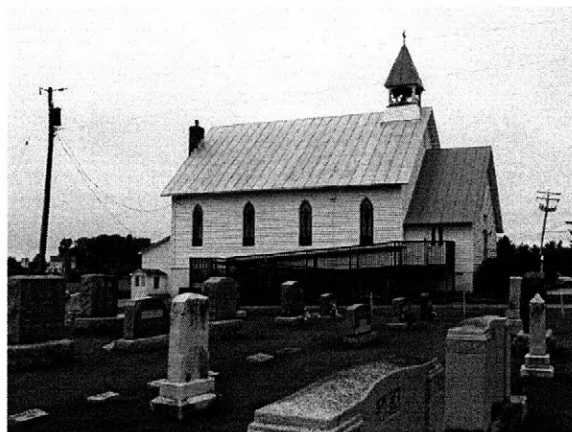
Maryland, USA

Plot: B10-11b

Created by: Becky

Record added: Feb 24, 2013

Find A Grave Memorial# 105775677



Cemetery Photo

Added by: The Guardian